

HESS - ROUNTREE, INC.  
CONSULTING ENGINEERS & LAND SURVEYORS  
9831 SOUTH 51ST STREET, SUITE C110  
PHOENIX, ARIZONA 85044 (480)496-0244

DES. **VR** DRN. **ANM** CKD **DRO** JOB NO. **2212-14**

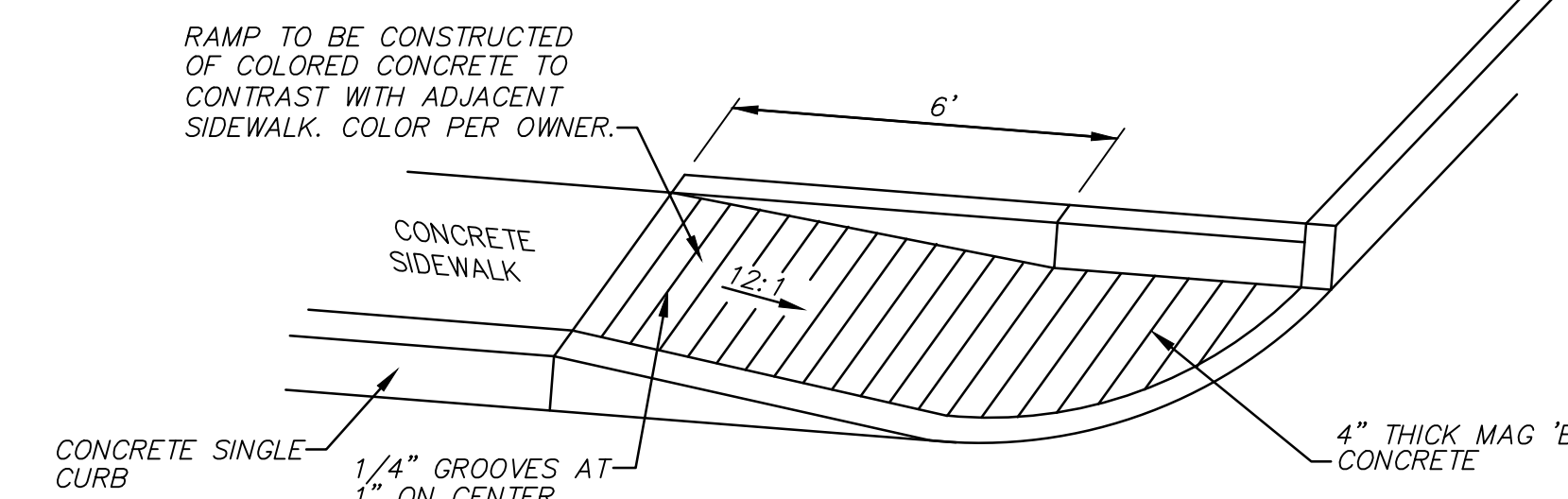
### GRADING AND DRAINAGE CONSTRUCTION NOTES:

- 1 INSTALL NEW A.C. PAVEMENT (3" A.C. OVER 8" A.B.C. OVER COMPACTED SUBGRADE).
- 2 CONSTRUCT CONCRETE SINGLE CURB (MAG STANDARD DETAIL NO. 222, TYPE 'A').
- 3 PAINT STRIPE TO THE ALIGNMENTS INDICATED INCLUDING ALL WALK WAY, DROP-OFF AREA, ETC. (TYPICAL).
- 4 INSTALL CONCRETE SIDEWALK (CITY OF PHOENIX STANDARD DETAIL NO. P1230).
- 5 INSTALL VAN ACCESSIBLE HANDICAP PARKING SIGN PER ADA AND CITY OF TOLLESON REQUIREMENTS. POST AND BASE SHALL BE PER MAG STANDARD DETAIL NO. 131, TYPE 'B'.
- 6 PAINT STRIPE VAN ACCESSIBLE HANDCAP PARKING STALL AND ADA PATH PER CITY OF PHOENIX AND ADA REQUIREMENTS.
- 7 INSTALL NEW 6' HIGH WROUGHT IRON FENCE. SEE DETAIL ON THIS SHEET.
- 8 INSTALL NEW 4' WIDE BY 6' HIGH WROUGHT IRON GATE. SEE DETAIL ON THIS SHEET. INSTALL NEW PANIC HARDWARE ON THE GATE. SEE ELECTRICAL DRAWINGS.
- 9 EXISTING LIGHT POLE TO BE RELOCATED. SEE ELECTRICAL DRAWINGS.
- 10 CONSTRUCT CONCRETE VALLEY GUTTER (MAG STANDARD DETAIL NO. 240, MODIFIED TO BE .3' WIDE WITH A 3/4" FLOW LINE).
- 11 INSTALL NEW SOD AS REQUIRED PER NEW CONSTRUCTION. REMOVE/REPAIR/RELOCATE/ADD IRRIGATION LINES/BOXES/SPRINKLERS AS REQUIRED PER NEW CONSTRUCTION AND TO PROVIDE A 100% IRRIGATION COVERAGE TO THE LANDSCAPE POST-CONSTRUCTION.
- 12 BLACK OUT EXISTING STRIPING.
- 13 STRAIGHT GRADE FROM 1" BELOW TOP OF CONCRETE SIDEWALK/A.C. PAVEMENT TO THE PROPOSED/EXISTING TOE OF SLOPE AT A 5:1 MAXIMUM SLOPE.
- 14 EXISTING TREE TO REMAIN AND BE PROTECTED FROM DAMAGE. MATCH EXISTING GARDE AT 5' FROM CENTER OF TREE AND STRAIGHT GRADE TO THE EXISTING OF SLOPE AT A 5:1 MAXIMUM SLOPE.
- 15 CONSTRUCT SIDEWALK RAMP (SEE DETAIL ON THIS SHEET).
- 16 MATCH EXISTING CONCRETE SIDEWALK, VALLEY GUTTER, CURB AND/OR GUTTER, A.C PAVEMENT LOCATION AND ELEVATION.
- 17 INSTALL 1/4" GROOVES AT 1" ON CENTER.
- 18 INSTALL 20' WIDE BY 6' HIGH WROUGHT IRON ROLLING GATE (SEE DETAIL ON SHEET C-1).
- 19 SAWCUT, REMOVE AND/OR REPLACE EXISTING A.C. PAVEMENT IN KIND AS REQUIRED FOR INSTALLATION OF NEW GATE/FENCE.

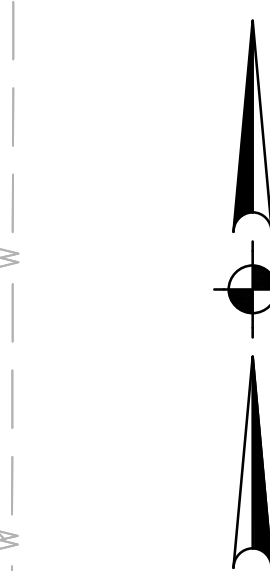
### ALTERNATE NO. 1:

- ⚠ IF THE EXISTING PAVEMENT SECTION DOES NOT MEET THE MINIMUM BUS PARKING PAVEMENT SECTION OF 3" A.C. OVER 8" A.B.C. PER THE SOILS REPORT, THE EXISTING A.C. PAVEMENT SECTION SHALL BE REMOVED AND REPLACED WITH A SECTION OF 3" A.C. OVER 8" A.B.C.

### \*\*SEE SHEET C-1 FOR LEGEND\*\*



### SIDEWALK RAMP NOT TO SCALE



SCALE: 1"=20'

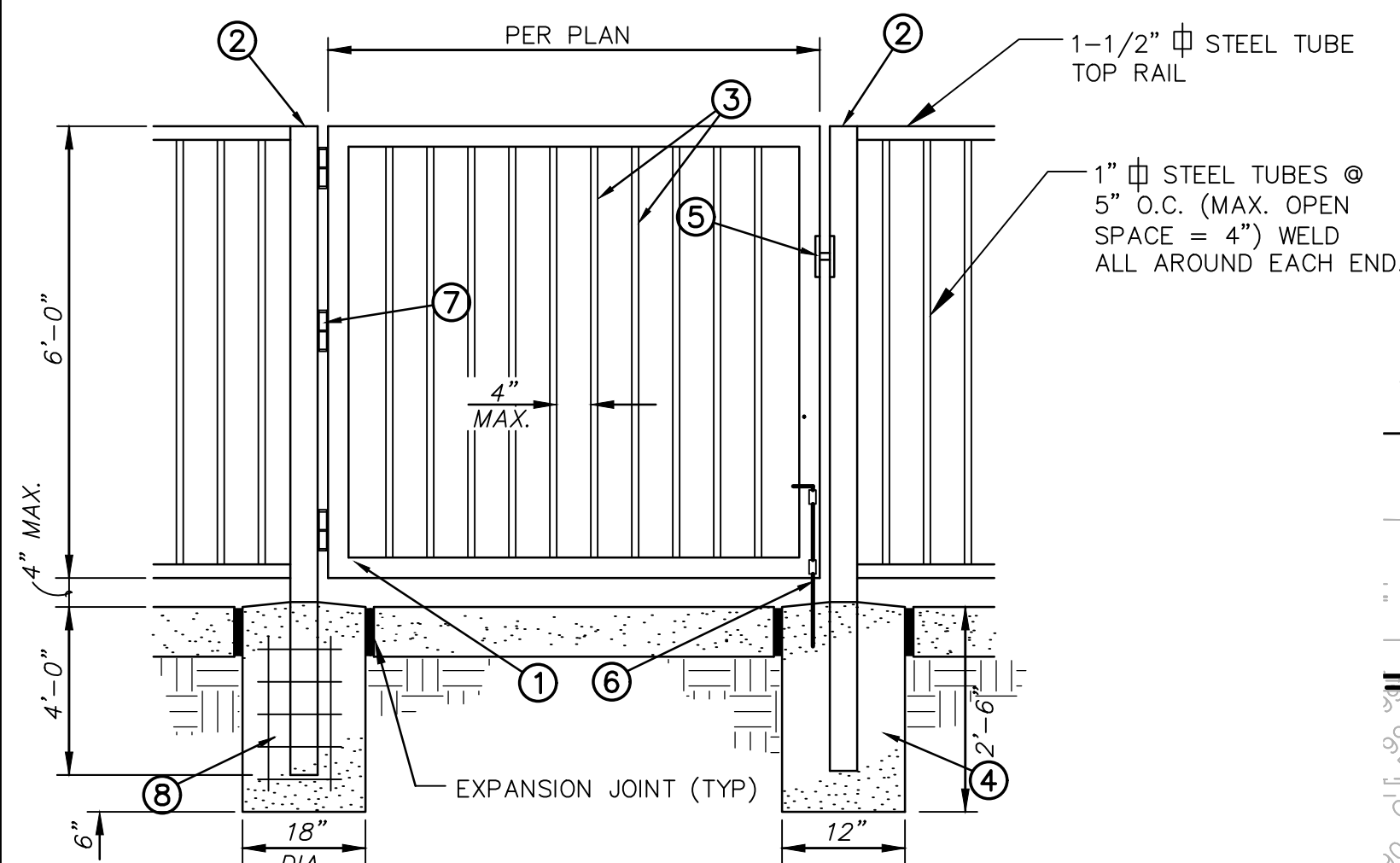


### GRADING AND DRAINAGE PLAN

### UNION ELEMENTARY DISTRICT NO. 62

### TRANSPORTATION FACILITY AT UNION ELEMENTARY SCHOOL

DRAWING STATUS	SHEET	OF	
100% CD SET			
DATE: 10-03-23	3	3	C-3



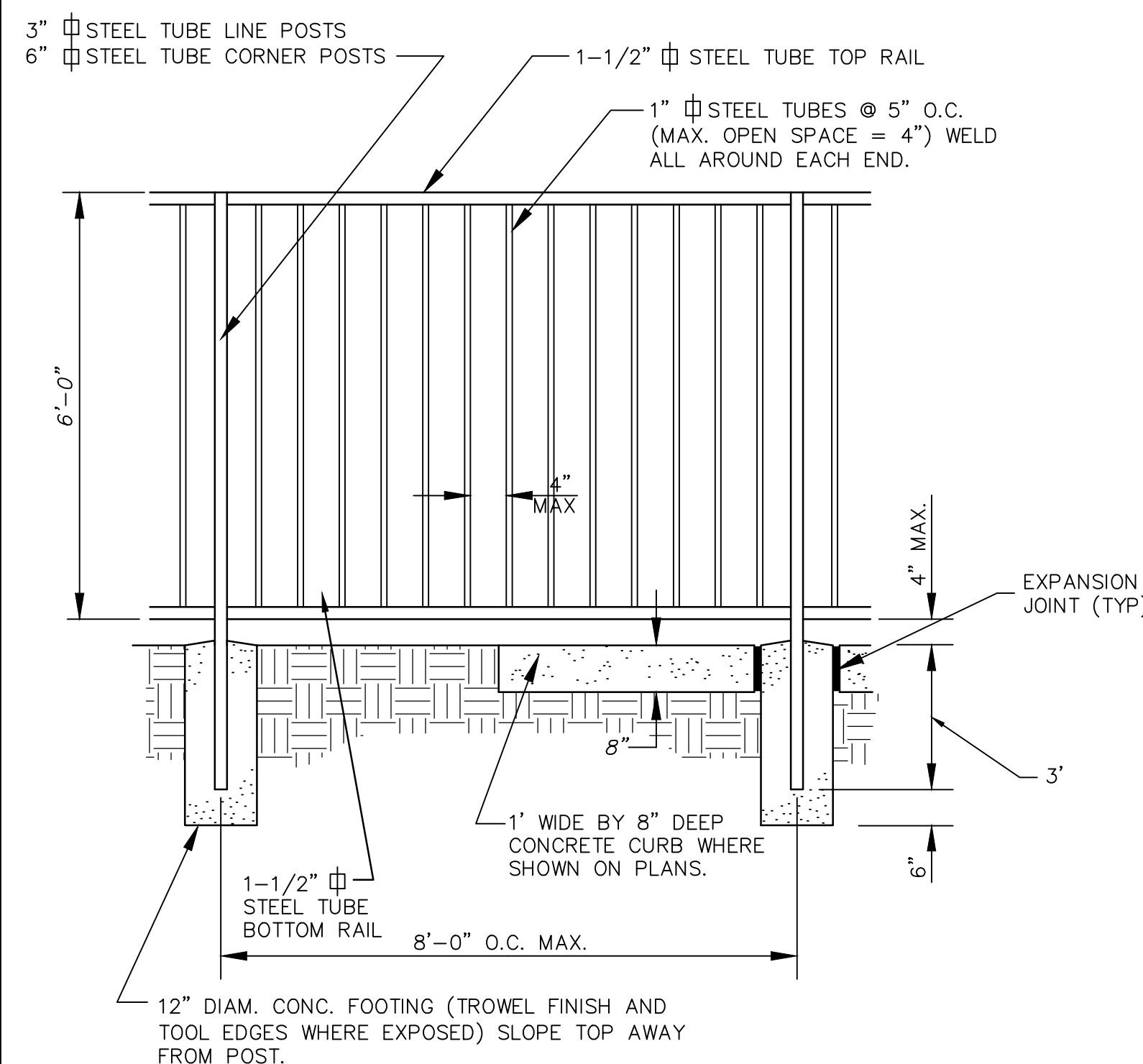
### KEY NOTES

- 1 2" X 3" STEEL TUBE GATE FRAME
- 2 6" X 6" STEEL TUBE POST
- 3 1" X 1" STEEL TUBE AT 5" O.C.
- 4 CONCRETE FOOTING (TROWEL FINISH & TOOL EDGES WHERE EXPOSED) SLOPE TOP AWAY FROM POST
- 5 TABS FOR PAD
- 6 CANE BOLT & KEEPER IN CONCRETE AT OPEN & CLOSED POSITION
- 7 HEAVY DUTY HINGES - CONTINUOUS WELD AT EDGES ALLOWING 180° GATE OPENING
- 8 6-#8 REBAR VERTICALLY AND #3 REBAR TIES AT 12" O.C.

### NOTE:

ALL GATES SHALL BE LOCKABLE IN THE OPEN AND CLOSED POSITION. COLOR OF WROUGHT IRON GATES PER OWNER. ALL FENCE/GATE DIMENSIONS SHALL BE FIELD VERIFIED PRIOR TO CONSTRUCTION.

### WROUGHT IRON GATE DETAIL NOT TO SCALE



### NOTE:

COLOR OF WROUGHT IRON GATES PER OWNER. ALL FENCE/GATE DIMENSIONS SHALL BE FIELD VERIFIED PRIOR TO CONSTRUCTION.

### WROUGHT IRON FENCE DETAIL NOT TO SCALE

